



Choose *smart*,
Choose *smart*





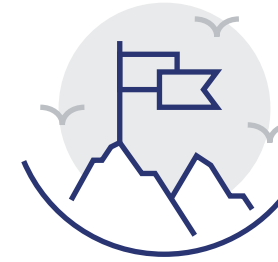
9+
Global Locations



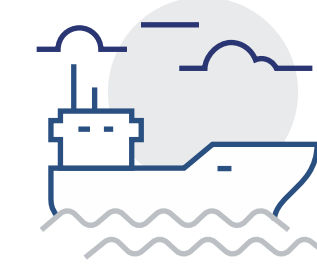
40+
Modules



1200+
Resources



90+
Clients



4000+
Vessel Implementations

Digital Solutions. Maritime Focus.

MariApps Marine Solutions is a leading digital technology company dedicated to providing customized software solutions for maritime enterprises.

Our flagship product, *smartPAL*, is a comprehensive suite designed to meet the evolving needs of the maritime industry.

With a global team of over 1200 experts, MariApps is committed to supporting maritime businesses in navigating the complexities of the industry.



Your choice digital solutions partner



Global Reach

Global presence allows for effective catering to customers' requirements.



Proven Expertise

Proven implementation experience, on over 4000 vessels.



Swift Implementation

Efficient and prompt mobilization of resources to achieve fast implementation.



Customized Solutions

Based on ship owners and ship managers requirements.



Industry Leading

Innovative, cyber-secure, and user-friendly software solutions with advanced web application performance benchmarks.



Long-Term Digitalization Support

Committed to support digitalization requirements based on fleet scalability of customer's needs.

Why Choose



Web-based maritime digital solution designed for prompt implementation with plug-and-play modules

Intuitive and customizable, with built-in interfaces serving as a

Customizable dashboard facilitating data-driven decision making and management through KPIs

Covers all functional areas of the ship management and ship owning

Optimized processes and workflows to improve productivity

Comprehensive video-based training modules with built-in self-assessment functions

smartPAL MODULES

FINANCE

- Accounts
- Treasury
- I2P
- OPEX
- PAL eXtrack
- Fixed Assets
- Financial Reporting

LIVEFLEET

- LiveFleet

INSURANCE

- Insurance

HRM

- Crewing
- Sea Roster
- New Applicant
- Payroll

PROCUREMENT

- Procurement
- Catering

HSEQ

- HSEQ
- QDMS
- Certification
- QDMS WIKI

OPERATIONAL

- Commercial

TECHNICAL

- Maintenance
- Drydock

CRM

- CRM

VALUE ADDED PRODUCTS

- smartOps
- Ticketing
- eRBooks
- eLogs
- smartSync
- eConnect
- LiveFleet
- MAXv
- BI
- Seafarer Portal
- Checklist
- Data Library
- InfoPoint
- Inventory
- IRT
- Makers List
- PAL eXtrack
- Plan Approval

MOBILE APPS

- Seafarer Portal
- Ticketing
- LiveFleet
- IRT
- Sea Roster
- eRBooks
- Inventory
- QDMS WIKI
- PAL eXtrack
- Checklist
- Approval

MOBILE OS COMPATIBILITY



BROWSER COMPATIBILITY



Procurement



Simplifying purchasing operations

Procurement modules offer a great degree of flexibility in configuring the procurement business process, various approval levels, and budgets per company policy. *smartPAL*'s intelligently designed purchasing solutions enable consumers to complete hassle-free purchase transactions in less time. The modules' several validations prevent human errors between transactions.



Procurement



Catering

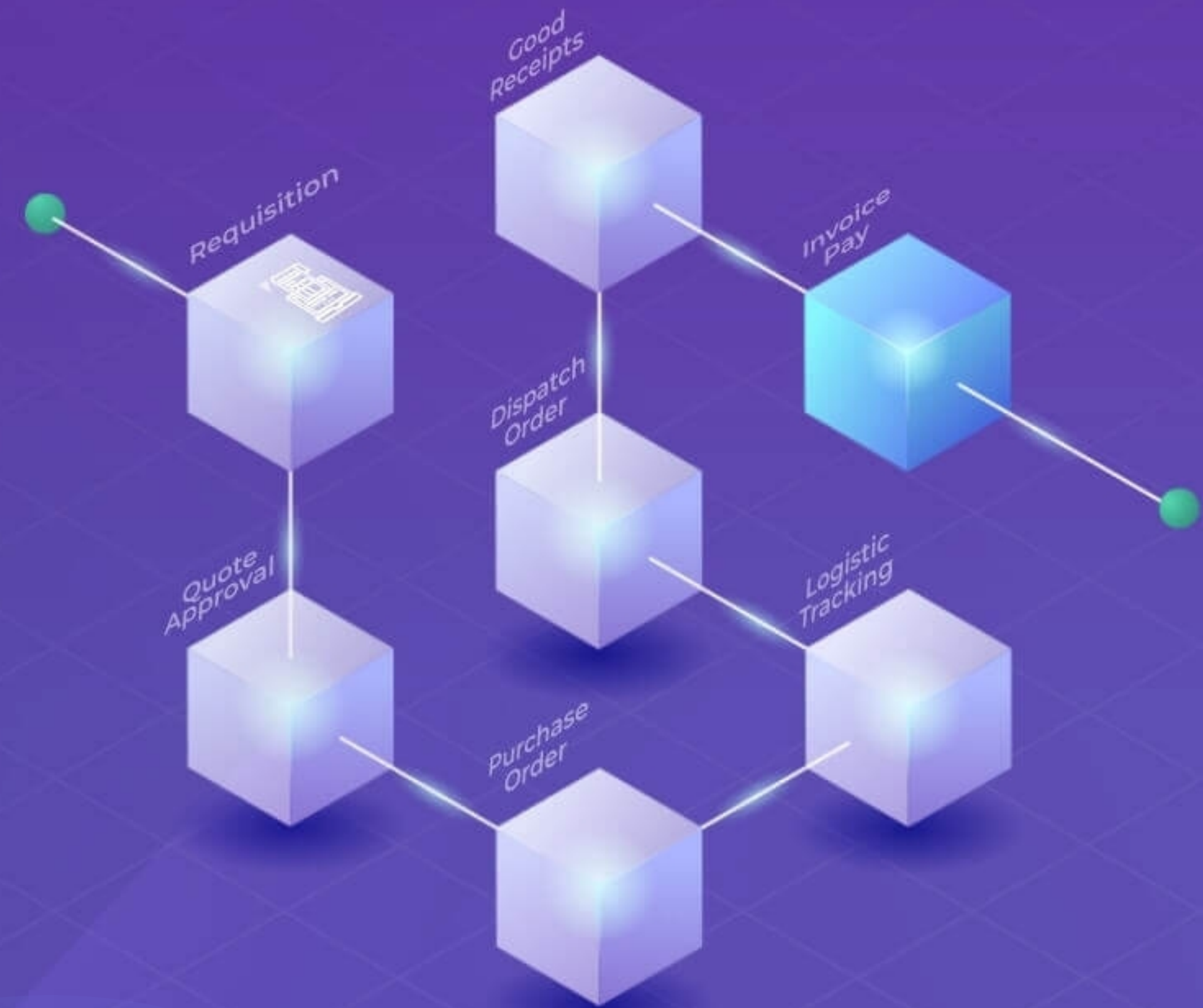


Procurement



A comprehensive inventory and procurement management system that can be integrated with other onboard modules. It enables seamless data flow through the Planned Maintenance and Accounting applications that provide a powerful platform to track stock levels, forecast spares demand, job planning, manage vessel budgets, and track vendor turnover. *smartPAL's* Procurement application can be integrated with third-party Business-to-Business (B2B) platforms and Vendor ERP systems.

- Manage technical expenses against vessel budgets
- Optimize inventory based on reorder levels, forecast consumption, and lead time days including vendor management
- Process enquiries and quotations
- Quote comparison and approval
- Issue, track, and approve purchase and service orders
- Tracks goods deliveries, register, and approve invoices
- *smartPAL V4* portal for safe and secure RFQ submission



Procurement



Catering





Procurement



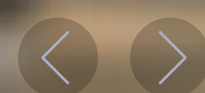
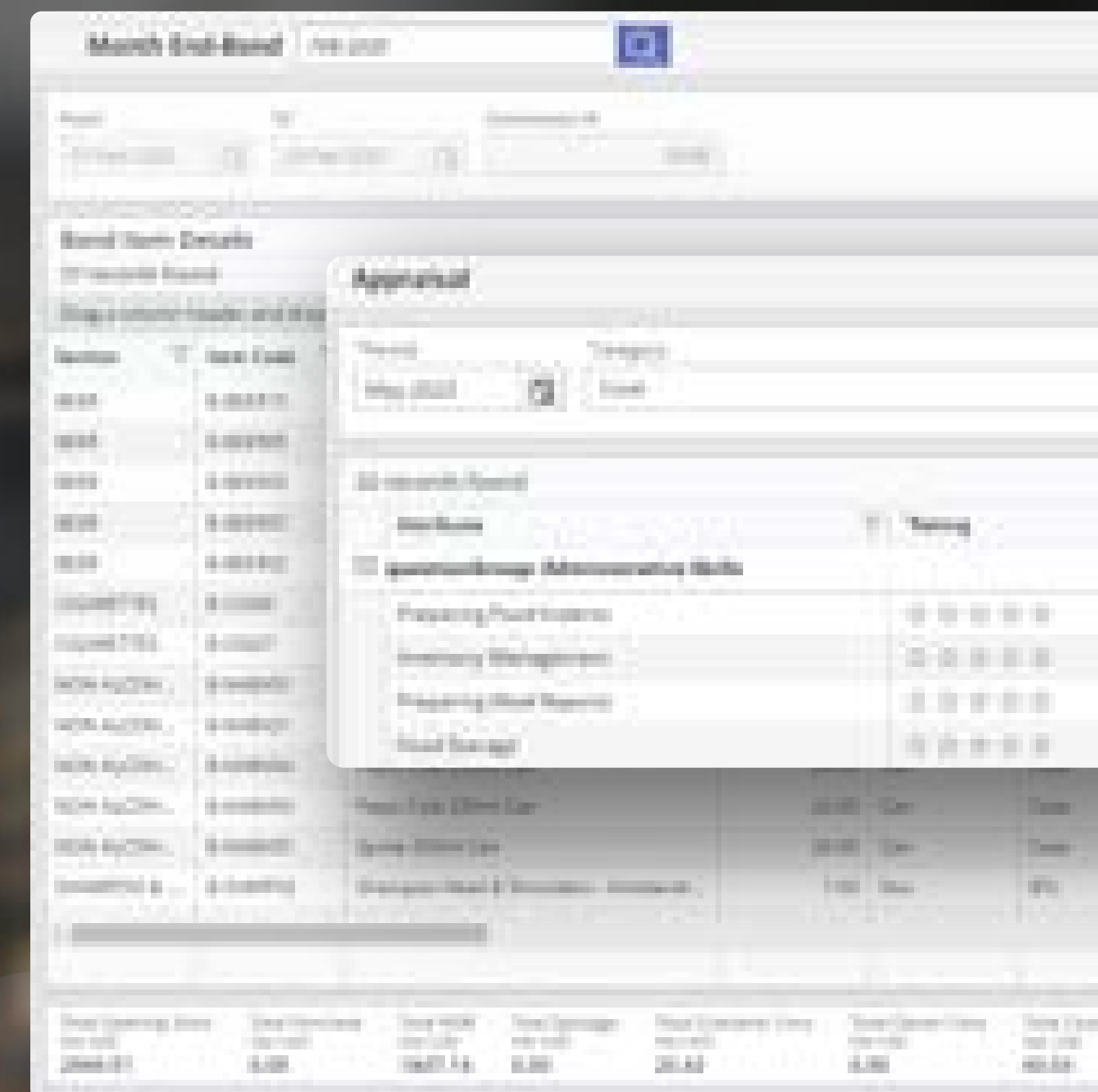
Catering

Catering



The Catering software provides ship owners and ship managers with extensive onboard catering services. The Menu Planning feature is a concept to help the master simplify the meal planning process onboard. Users can auto-generate provision requisitions with the help of the Chief Cook, collate costs onboard, and ensure the planning process is in line with the vessels' budgeting requirements.

- Detailed Menu Planning
- Calorie tracking for every menu planned
- Built-in multi-cuisine menus
- Complete purchase cycle
- Personalized reports
- Generate provision requests
- Food cost management
- Appraisal reports



HR & Payroll



Delivering exceptional crew experiences

The modules allow office users to manage the ship crew pool, sign on/off, transfers, and promote/demote seafarers. Access self-management portals for both new candidate seafarers and existing sailing crew. The portal enables sailors to keep their PAL-created CVs up-to-date, as well as their certifications, documentation, and licenses.



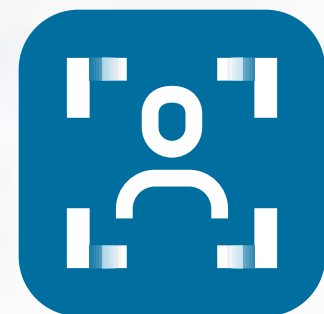
Crewing



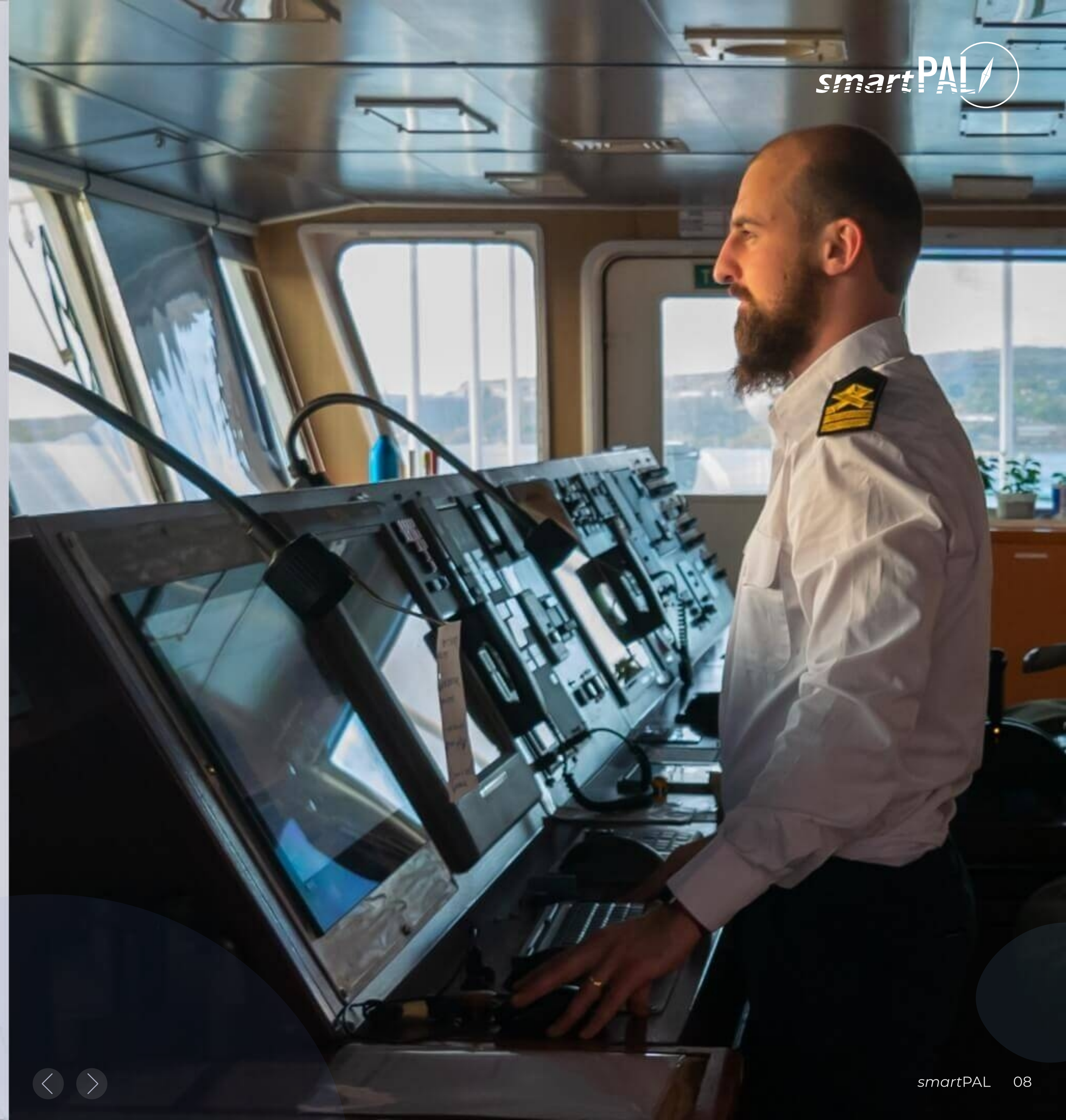
Payroll



Sea Roster



New Applicant

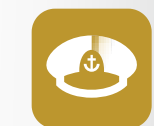


Crewing

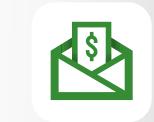


Centralized system to manage the activities and data of both seafarers working onboard and ashore. Manage employee contracts, payrolls, documentation, training, claims, expenses, and activities. Track activity year-round for salary and fee-based employees.

- Cloud-centric workforce management supported with mobile apps to track overall crew details anywhere, anytime
- Exchange quotations and PO budgets
- Crew management made seamless via Applicant Portal, with consistent data integration to other modules like Crewing, Ticketing, Sea Roster, Payroll, *smartOps*, Procurement, Accounts, Insurance, Catering, and Seafarer Portal
- Custom dashboards with dynamic views for quick analysis and efficient decision making
- Integration with third party vendor systems like Seagull, Videotel, OCIMF, Q88, and various other systems for effortless data processing
- Access comprehensive graphical planning of seafarers as per vessel requirement document checks. Provision to select crew based on management requirement and owner specifications



Crewing



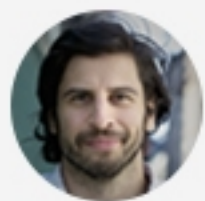
Payroll



SeaRoster



New Applicant



FOUZDAR, SHARZAD ZUBIN

000616
4th Engineer Trainee
30 Year, MALE
Mumbai, Indian

Sign-on

Sign-off

Activities

Travel To Vessel

Sign-On

Extend/Reduce

Promotion/Demotion

Transfer

Sign-Off

Reverse

Sub Activity

Make Inactive

Make Active

Make NTBR

Owner

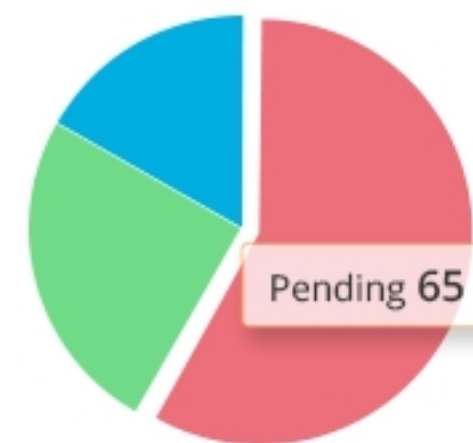
Manager

Group

Make De-NTBR

Owner

Crew Plan 1 Month 2 Month



■ Pending ■ Approved ■ Completed



Payroll



A versatile and advanced payroll processing system to manage multi-national, multi-currency transactions, and payroll calculations for the crew onboard. Provides efficient management of monthly payrolls for both salary and fee-based seafarers. Seamlessly integrated with Crewing and Accounts modules for managing crew contracts, dispersal of wages, and automatic transaction interfaces. Export to various e-banking systems for payments with interfaces that additionally allow for the preparation of accounting entries.

- Monthly inputs, and shipboard deductions entered via the vessel module
- Payslip generation and processing can be done on the vessel module
- Personalized allotment processing
- Payroll charges reporting
- Portage bill integration, incidental expenses, booking, and payments
- Access payslips on Seafer Portal on web and/or mobile
- Wage and automated bonus calculator
- Configurable allotment and bank charges

Payroll Overview

Apr 2023 ⁸⁵ | May 2023 ⁸⁵ | Jun 2023

My Vessel | Alpha ⁵³ | BOURBON EXPLORER 500 ³² | Ekspres 93 | Gama | Green | RN TEST DRY | RN TEST WET

PAYROLL 0% | **ALLOTMENT** 0% | **85** TOTAL EMPLOYEES | Off-signers 1 | Joiners 0

Pending Approval

- 4 Regular allotment approval
- 0 Special allotment approval
- 0 External allotment approval
- 0 Signoff allotment approval
- 0 Final Settlement allotment approval

Seafarers on-board

- 6 Bank account approval
- 0 Incidental expense approval
- 84 Monthly input confirmation
- 85 Payroll process
- 0 Payslip finalise
- 0 Payslip sent to vessel
- 0 Payroll closing



Crewing



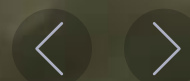
Payroll



SeaRoster



New Applicant



Sea Roster



Sea Roster is a crew management software that manages the requirements onboard for compliance with regulations for crew hours of work and rest (STCW 2010, ILO MLC, US OPA 90, and OCIMF recommendations). The crew management software closely monitors any repeat deficiencies and adjusts future working routines onboard to prevent excessive working hours and reduce fatigue amongst the seafarers. Sea Roster can act as a standalone module or can be combined with Crewing, *smartOps*, and Accounts. It allows for the transfer of crew and vessel information, while the voyage plan is provided by the *smartOps* module.

- Tracking of work and rest hours based on guidelines by global manpower regulatory bodies
- Management of individual and bulk schedules
- Provision to create plan from templates
- Integration with payroll module for overtime calculations
- Data Library for job planning
- Integration with Crewing module for various seafarer related details
- Advance or D-day options
- Can increase deferred efficiency in task management
- Japanese flag state requirements for regulations of work and rest hours

	Date	00	01	02	03	04	05	06	07	08	09	10	11	12	13	14
<input type="checkbox"/>	01-Thu															
<input type="checkbox"/>	02-Fri															
<input type="checkbox"/>	03-Sat															
<input type="checkbox"/>	04-Sun															
<input type="checkbox"/>	05-Mon															
<input type="checkbox"/>	06-Tue															
<input type="checkbox"/>	07-Wed															
<input type="checkbox"/>	08-Thu															
<input type="checkbox"/>	09-Fri															

Schedule Task ▾

Sea Normal

SN DR NV TT SS

Sea Watch

SW AB RO SE

Port Normal

PN CW NN P

Port Watch

PW DR PP PD PP

Clear

-
- Crewing
- Payroll
- SeaRoster
- New Applicant



New Applicant



Our marine recruitment software, accessible via web and mobile portals, leverages big data and artificial intelligence to manage applicant profiles and recruitment processes efficiently. Our recruitment application connects to Crewing, which facilitates the process of screening and handling applicants. The New Applicant recruitment software ensures shipping companies fill vacancies faster and expedite the job offer processes by utilizing advanced machine learning.

- Centralized data of new applicants for convenient accessibility and retrieval
- Public portal to register new applicants of potential seafarers
- Upload offline application forms
- Configure approval processes for selection of candidates

- Crewing
- Payroll
- SeaRoster
- New Applicant

New Applicant Details

460409



Overview

Rank Applied
2nd Officer

External Agency
--Not Specified--

- Overview
- Profile
- Documents
- Experience
- Communications
- Family
- References

Documents

Document Name	Issuing Country	Expiry Date
PASSPORT	Spain	06-Jun-2024
SEAMAN BOOK		
US VISA	United States	08-Mar-2027
Chief Officer (Reg. II/2 Par. 1-2)	Spain	04-Dec-2024
Medical Fitness Report (ILO/MLC 2006)	Spain	21-Jun-2023

Experience

By Rank [By Vessel Subtype](#)

Vessel Subtype	Other Company
Asphalt/Bitumen Tanker	0Y 0M 2D
Chemical/Oil Products Tanke...	0Y 5M 4D
Crude/Oil Products Barge	0Y 3M 1D
General Cargo Ship	0Y 4M 24D
LPG Ethylene Carrier	0Y 6M 1D



Technical

Effortless management of a vessel's technical operations

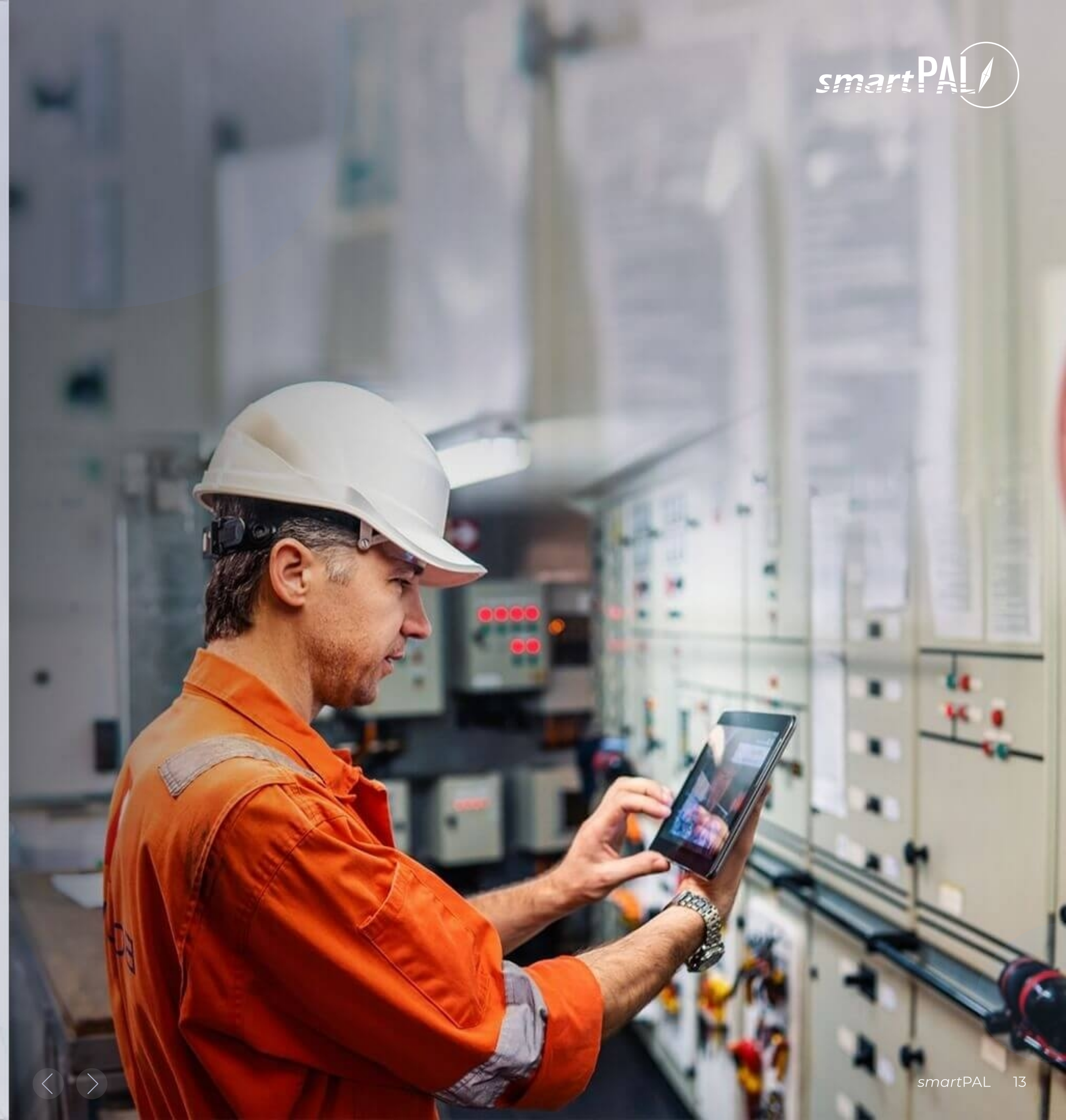
smartPAL's tightly linked technical solutions boosts user productivity in both the office and on board. The single-door technique significantly reduces crew efforts in job reporting and facilitates close module-to-module interaction.



Maintenance



DryDock



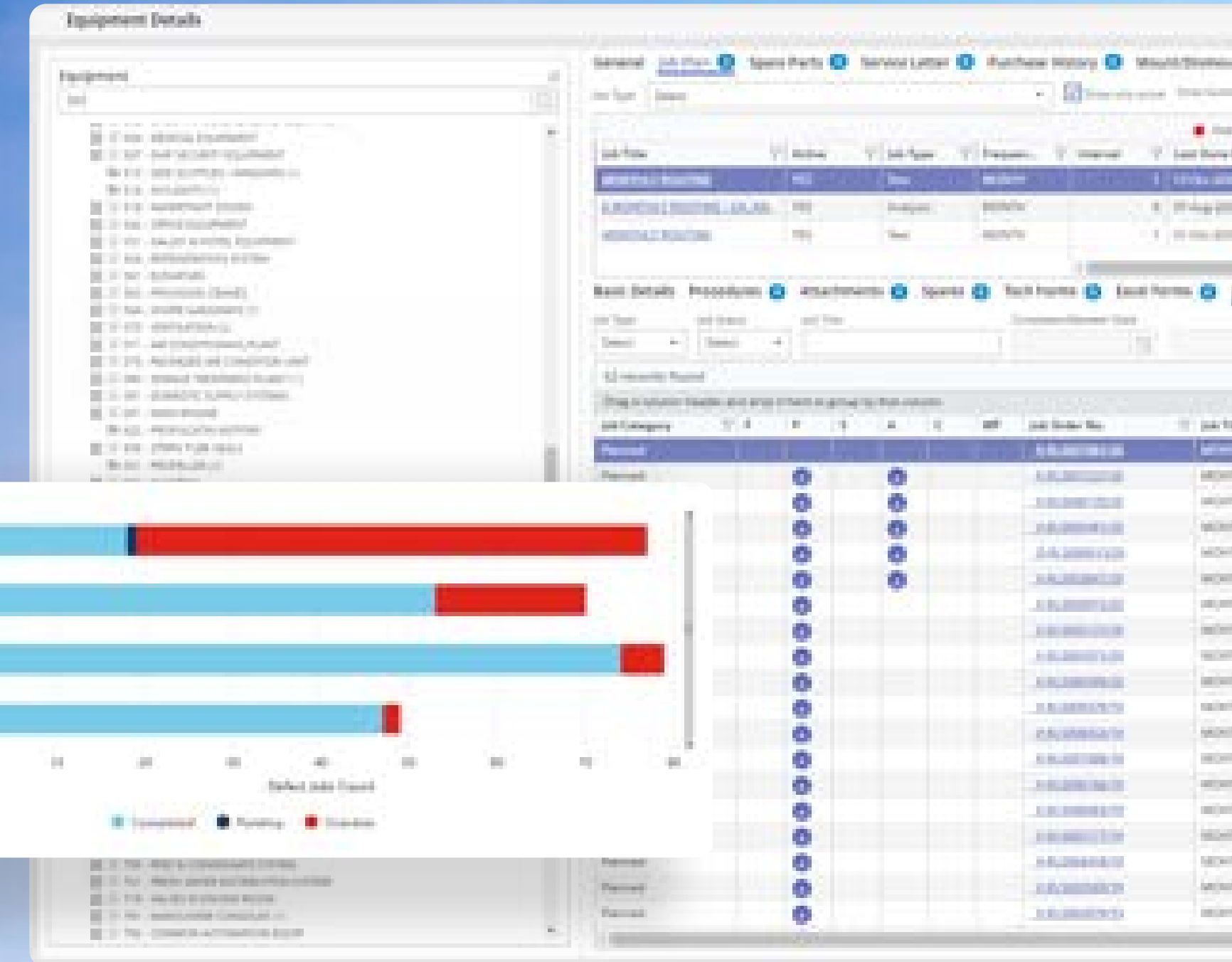


Maintenance



The Maintenance modules delivers the tracking of assets, assemblies, and parts associated with the vessel installation. The DNV GL type approved product can be configured according to the manufacturer's/class requirements. The module possesses features that include pre-planning and scheduling of jobs containing cost and time projections. The pre-planning capability provides resource, time, and spares planning which plays a critical role in inventory management based on predictive and preventive maintenance routines.

- ClassNK and DNV GL type certified
- PMS data building utilities
- Equipment data management
- Order spare parts and items
- Data Library for job planning
- Maintenance completed and overdue analysis
- Condition Based Maintenance Data (CBMD) associated with the asset
- Detailed BI reports for supplier and client



Maintenance



Drydock



HSEQ



Health, Safety, Environment and Quality

Designed specifically for the shipping industry to help manage and improve HSEQ processes. Maintaining a vessel's safety standards, tracking certificates, risk management and incident reporting are a few examples of what can be achieved with *smartPAL's* safety modules.



HSEQ



QDMS



Certification

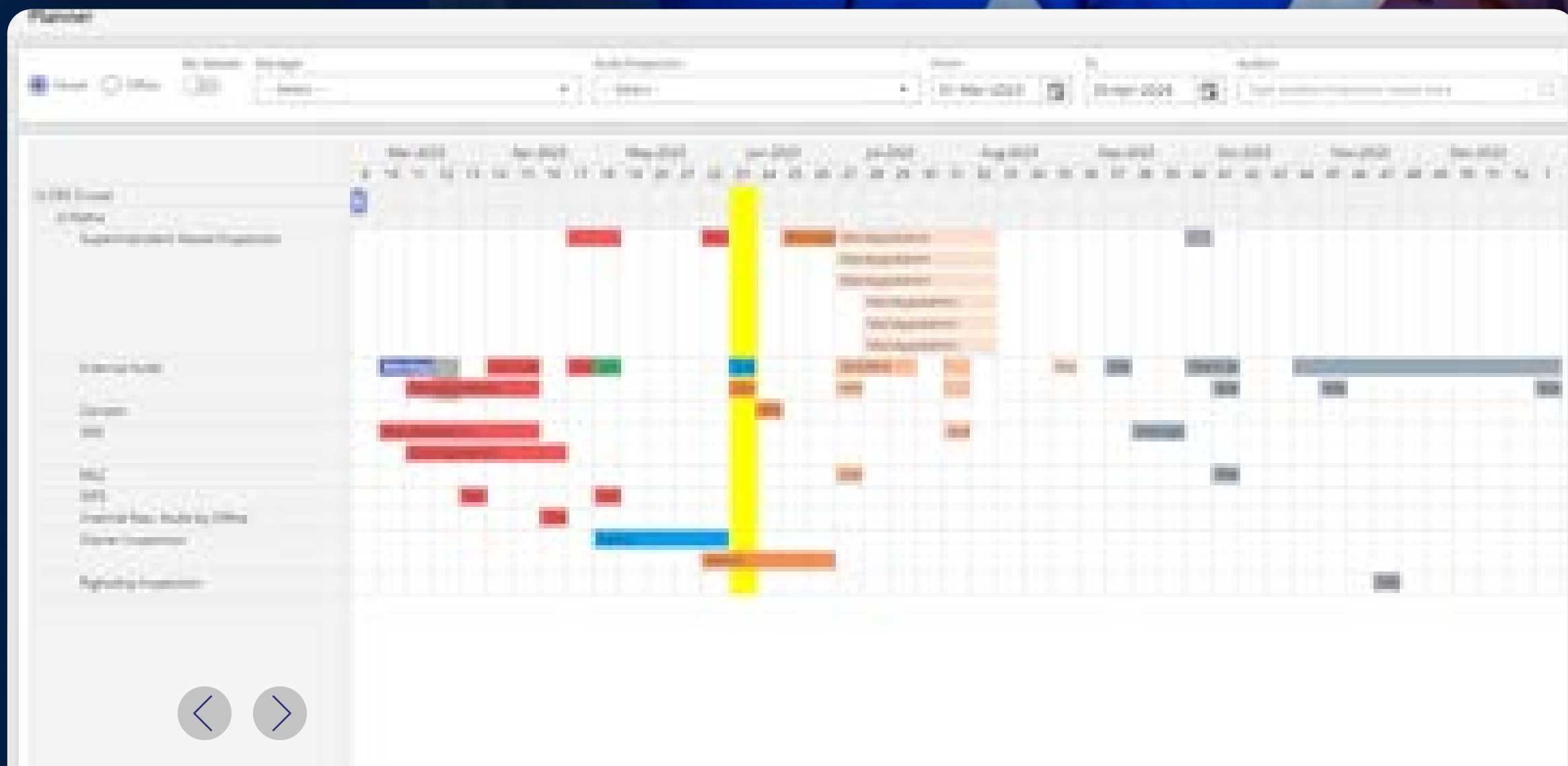




HSEQ

The HSEQ module is an efficient safety and quality management system. It is a completely integrated system which focuses on maritime compliances and regulations to ensure safety at sea and ashore.

- Audit and inspection planning
- Inspection Reporting Tool (IRT) for mobile devices and offline work
- Unsafe Condition, Unsafe Act, Near Miss and Incident reporting
- Safety and management meetings
- Drill scheduling, reporting, and lessons learned
- Risk assessment management
- Insurance review and approval of work permit
- Management of change process
- Behaviour-Based Safety (BBS)
- Periodical reviews and action follow-up
- KPIs, comprehensive set of reports, and dashboard tiles





QDMS



The QDMS module is a ship-shore integrated solution that allows the company to reduce the administrative burden of document management. The tool provides shipping companies with the capability to establish and implement common efficient policies and operating procedures, distribute best practices across their fleet and organization. The module enhances safe and efficient operations on the vessels.

- Safety management manuals, quality management manuals, technical documents, rules and regulations etc. at sea and ashore
- Supports all internal and external document types, including policies, procedures, forms, manuals, safety advisory notes etc.
- Efficient workflow for document creation, revision, review, approval, and publishing
- Full document controls throughout document lifespan e.g. versioning and archiving
- Full text or refined search, result list with document preview
- Efficient replication of documentation from shore to vessels



HSEQ



QDMS



Certification



Finance



A set of simple and systematic financial modules

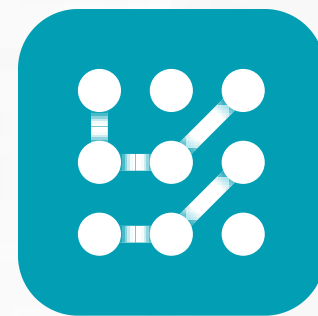
smartPAL's comprehensive finance modules empower you to control and maintain operating budgets, payables, receivables, and financial transactions accurately and securely. Experience the efficiency and reliability of *smartPAL's* Finance modules in managing your financial operations.



Accounts



Financial Reporting



I2P Bot



Treasury



Fixed Assets



Transaction Pending For Approval

162 ACCR

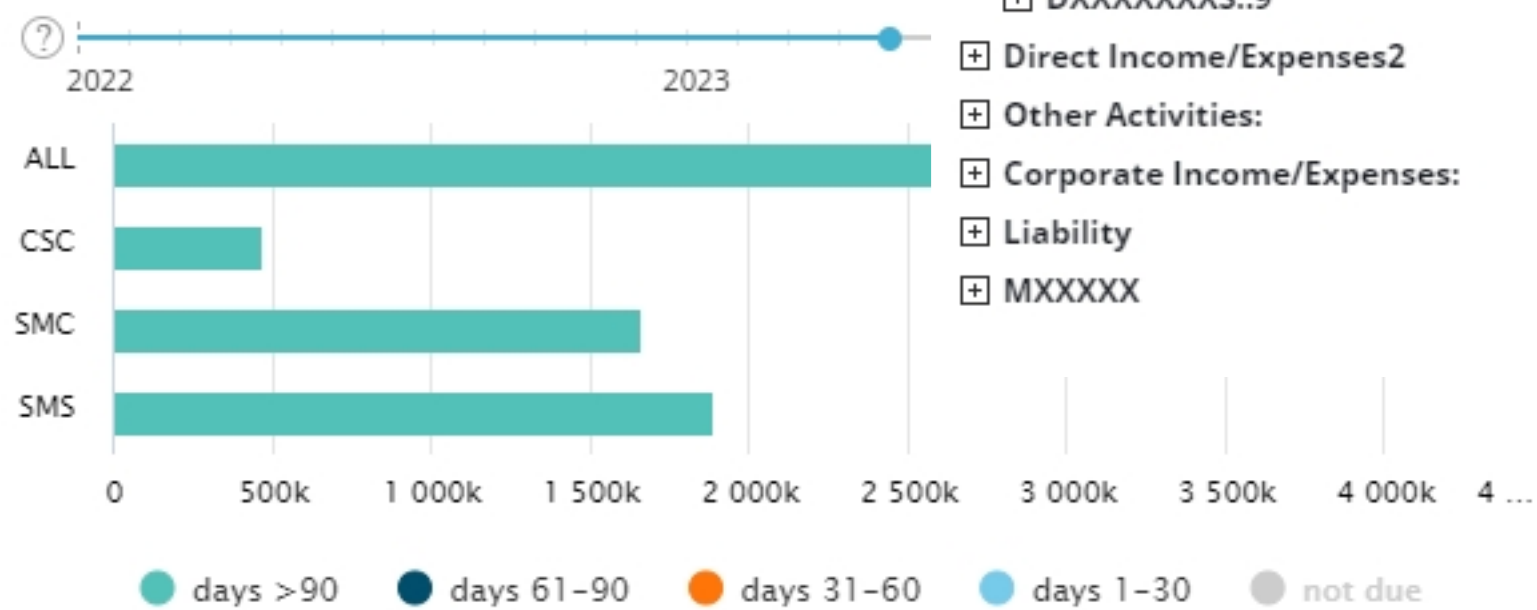
5 INT

3 JV

1 REC

- Assets:
- Vessel/Owner Income & Expenses:
- Shipmanagement - Direct Income and Expenses:
- Direct Income/Expenses1
 - IXXXXXXXXS::3
 - CXXXXXXXXEE
 - Retained Earnings1
 - Crew Recruitment Fee**
 - SXXXXXXXXME:2
 - SXXXXXXXXSE:4
 - IXXXXXXXXS::5
 - DXXXXXXXXS::7
 - DXXXXXXXXS::9
- Direct Income/Expenses2
- Other Activities:
- Corporate Income/Expenses:
- Liability
- MXXXXX

Accounts Payable Ageing



Accounts



A comprehensive Marine Accounting Software

A multi-national, multi-currency, and multi-company business accounting software, which can be integrated with other core modules such as Purchase, Crewing, and Payroll. It covers all aspects of ship management during the vessel management cycle.

- Customizable owner presentation charts defined per entity budgeting
- Set up a new vessel entity in the system based on the owner contracts
- Invoicing the client/owner (accounts receivable), processing the received invoices (accounts payable), and ageing analysis reports (AR/AP)
- Monitoring vessel expenses and owner cash position
- Direct banking transaction interfaces
- Detailed BI reports for supplier and client



Accounts



Financial Reporting



I2P Bot



Treasury



Fixed Assets



Financial Reporting

Publish reports from various sources and modules at ease

A platform for publishing reports from various sources and modules e.g. Accounts. The module enables several types of configurations required for LiveFleet including alerts. Supports manual data upload if required.



Accounts



Financial Reporting



I2P Bot



Treasury



Fixed Assets





I2P Bot



I2P bots provide cognitive automation solutions that enable an efficient purchase-to-pay cycle. MariApps' *smartPAL* presents I2P bots to scan, interpret and scan data intelligently for the invoice processing system which eliminates manual invoice processing.

Transform long cycle times and delayed payments into efficient and error-free digital invoice systems. I2P bots mitigate recurring manual processes with cognitive automation for invoicing and account payable automation thus enhancing the visibility of purchase procedures to make your business more efficient.

- Mitigates recurring manual processes
- Intelligent invoice processing solution
- Increases cost savings for supplier and vendor management
- Improves long cycle periods and delayed payments through an efficient and error-free system

✓	RE: Eka-Benya S.A. - P023-0005-2564-MKR	SG508702		
12/13	W KITHIRA	466.32 EUR		30-May-2023 04:42:52
✓	RE: Eka-Benya S.A. - P023-0005-2564-MKR	SG508702		
12/13	W KITHIRA	466.32 EUR		30-May-2023 04:42:52



Accounts



Financial Reporting



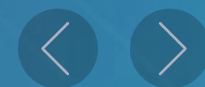
I2P Bot



Treasury



Fixed Assets





Treasury



smartPAL's Treasury module is an innovative digital solution, that offers insights into your company's cash flow, enabling you to plan future business endeavors more effectively. With a focus on loan management, SWAP operations, and cash balance reporting, Treasury collaborates seamlessly with *smartPAL's* Accounts and Financial Reporting modules. Its dynamic and interactive dashboard, presented in a user-friendly environment, provides clear visual representations to enhance understanding and decision-making. Experience the capabilities of *smartPAL's* Treasury as it transforms your financial operations into a more efficient and insightful process.

- Keep track of the cash control balance of your companies
- Complete loan management
- Record principal payments, interest repayments, accruals, loan charges, and more
- Analyze loan-to-asset value ratio
- Cash forecasting



Accounts



Financial Reporting



I2P Bot



Treasury



Fixed Assets





Fixed Assets



The Fixed Assets module is designed to streamline and enhance asset management across the maritime industry. The platform offers a comprehensive approach to tracking, depreciating, and maintaining your fleet's assets, ensuring compliance and efficiency.

- Maintain fixed asset registry
- Perform transactions (depreciations and revaluations)
- Generate and post accounting entries
- Access comprehensive reporting tools
- Lease asset management

The screenshot displays the Fixed Assets module interface. At the top, a summary bar shows: Total 1796, Draft 735, Active 1023, Sold 28, and Disposed 10. Below this is a table with columns for Entity, Asset Code, Asset Component, and Asset Number. A 'Create new Asset' form is overlaid on the right, with fields for Asset Name, Company (EMARATH LTD), Asset Type (Vessel), Entity (FA Entity - USD), Tax Year (2024), Asset Category (Corporate New Straight FR M), and Reporting (Select). A 'Create new Asset' button is visible. In the foreground, a donut chart titled 'Asset Details Overview' shows the 'Total' value of 1796, broken down into Draft (735), Active (1023), Sold (28), and Disposed (10).



Accounts



Financial Reporting



I2P Bot



Treasury



Fixed Assets

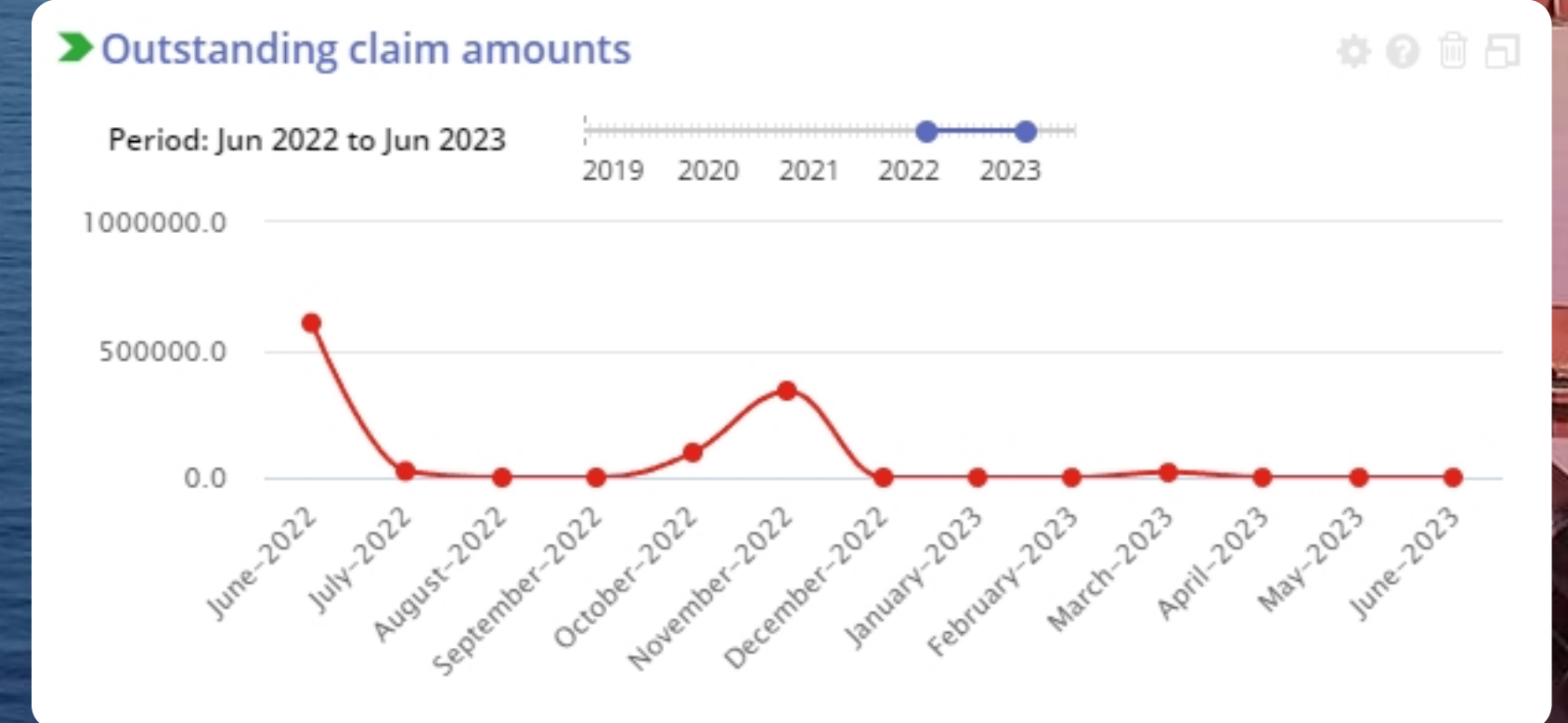


Insurance



The Insurance module is a comprehensive claims handling, reporting, and operational analysis tool. This module provides a reliable and efficient way to record and process all types of ship management related claims.

- Policy settings
- Management of incident details
- Expenditures and payment management
- Claim statements and cover letter generation
- Identifying non-accepted items/cost
- Day-to-day claims process status update
- Review and approve claims
- Comprehensive set of reports and dashboard tiles



LiveFleet



The LiveFleet module is designed for ship owners to access all key vessel information at a glance. Owners can track vessels in near real-time and stay informed on all key parameters with vessel tracker.

- Vessel and voyage performance
- Planned maintenance and purchase reports
- Technical details, financial, and operational reports
- Noon reports and vessel performance metrics
- In-depth data analytics
- Automated alerts
- Crew lists and distribution by nationality

The screenshot displays the LiveFleet mobile application interface. It features a search bar at the top with the text "Search Vessel, Port...". Below the search bar are tabs for "All", "Vessel", and "Port". The main content area is divided into several panels:

- Alerts Panel:** Lists four items: "01 Drydock Planned in next 3 months", "05 Vessels Non-Compliance in last 100 months", "64 Consumption Alerts in last 60 months", and "01 Vessel OPEX Over Budget 8% over budget".
- OPEX Variance (USD) Panel:** Shows data for "Jan 2018 to Sep 2018" with a "Total Variance \$ 320,893". It includes a bar chart and a list of categories: Crew Costs, Insurance Costs, Lubricants, Spares, Repair & Maintenance, Classification, Others, and Management Fees.
- Vessel Tracking Panel:** Displays a large image of a container ship (Gamma) with a "show Track" button.
- Vessel Details Panel:** Shows the ship's name "Gamma", type "Container Ship", and coordinates: "Latitude: 37°50'31.42"N" and "Longitude: 143°3'18.18"E". It also indicates "Current speed: 1.74 kn".
- Port Calls Panel:** Lists two port calls: "Kashima, Ibaraki, Japan" with "ATA: 18-MAY-2023 08:06 UTC" and "Singapore, Singapore" with "ETA: 07-JUN-2023 00:00 UTC".

At the bottom right of the screenshot, it says "Last updated : 13-May-2023 9:00:43 UTC".

Value Added Products

-  **Ticketing**

Simplify travel management with Ticketing's unified platform. Seamlessly create, track, and manage travel requests, integrated with HRM and Accounting modules.

-  **MAXv**

MAXV, allows for comprehensive monitoring of all information and data transfer in the system, safeguarding vessel systems and data from any type of digital attack or compromise.

-  **IRT**

Enhance vessel inspections with IRT, a comprehensive ship safety management software. Capture audio comments, photos, and scores for transparent and accurate data and reports, whether as a standalone app or an extension of the HSEQ desktop module.

-  **PAL eXtrack**

Effortlessly manage employee expense claims and reimbursement with PAL eXtrack. Streamline processes, eliminate manual tasks, and enjoy convenient web and mobile access for seamless submission, verification, and approvals.

-  **BI**

Powered by intelligent analytical tools that scan, monitor, and showcase trends of near real-time data, users can share parameterized reports effortlessly with external clients and stakeholders.

-  **eRBooks**

Electronic Record Books are designed to replace the conventional paper-based record books. An intuitive web-based application that helps comply with relevant regulatory body requirements.

-  **eLogs**

eLogs is a flexible and dynamic electronic log book tool designed to work with various types of ships and operations. In addition to the standard library of ship specific and company specific events it can be easily added and configured for vessels.

-  **Seafarer Portal**

Streamline crew management with Seafarer Portal, serving as an all-in-one solution for enhanced ship operations. Optimize crew deployment, facilitate seamless communication, and streamline employee contracts, payroll, documents, training, claims, expenses, and activity tracking.



smartOps

smartOps is an advanced fleet performance analytics platform that supports the optimization of vessel operations

- Utilize data reported through a state-of-the-art vessel application, telemetry data recorded directly from sensors, as well as position and weather data. Vessels are benchmarked against their own tailored digital twin, with results delivered in a clear and user-friendly manner
- Manage decarbonization, while enabling cost and reliability efficiencies through predictive and proactive insights transparently, ashore, and onboard



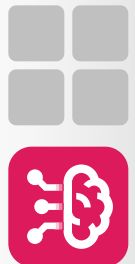
eConnect



eConnect is a web-based, end-to-end e-commerce solution that provides reliable and efficient processing of transactions. eConnect features a direct interface for exchange of goods and services which can be integrated with external systems and other *smartPAL* modules, enabling seamless data flow throughout transactions.

- Update vendor profile
- Exchange quotations and PO budgets
- Goods received and invoices with vendor sets
- Alerts and notifications on information exchanges
- Export and import data through excel budgets
- Feasible integration with logistics solutions, warehouses, and forwarders budgets
- Flexibility in data exchange format budgets
- Improve communication, performance, and process efficiency budgets





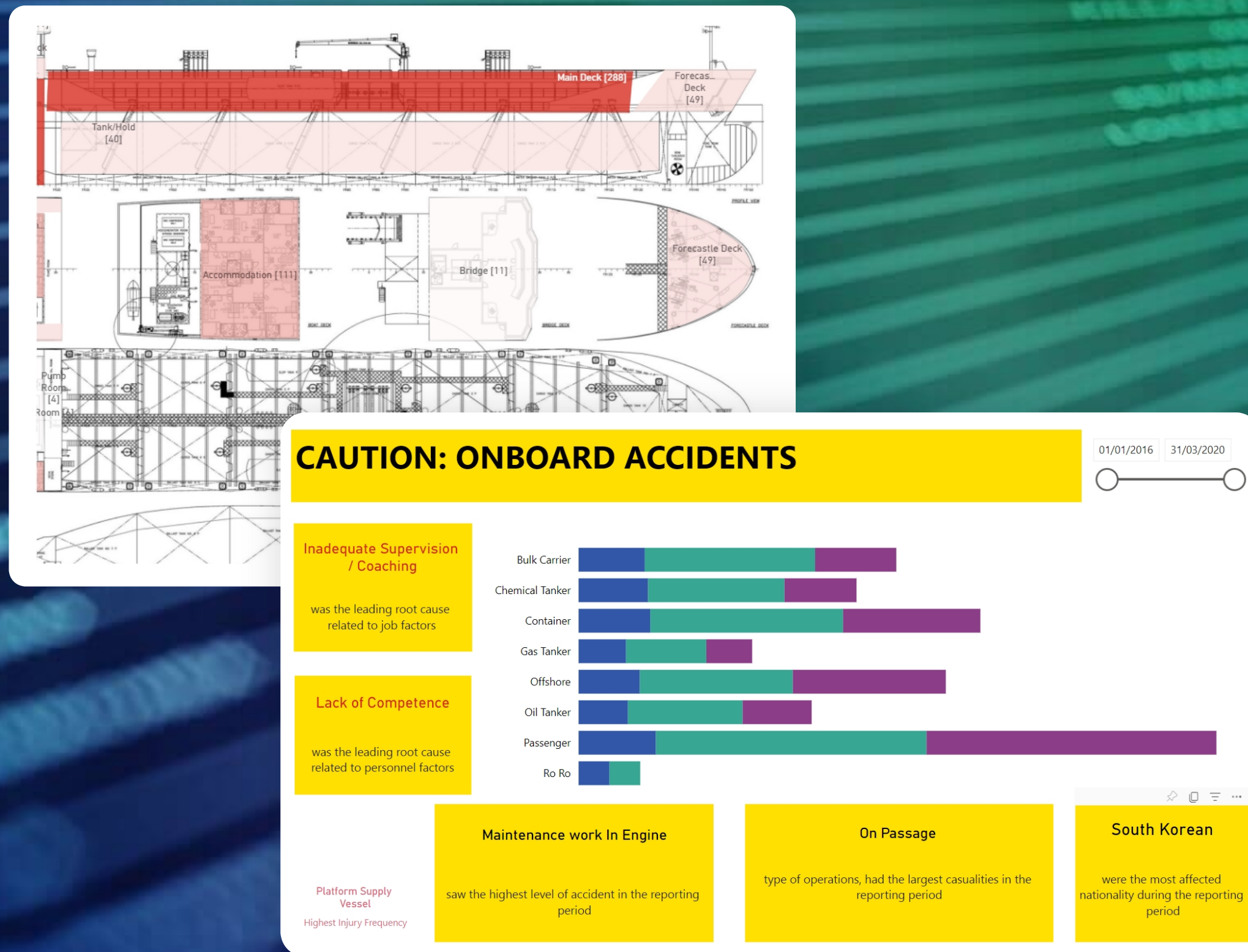
BI

BI

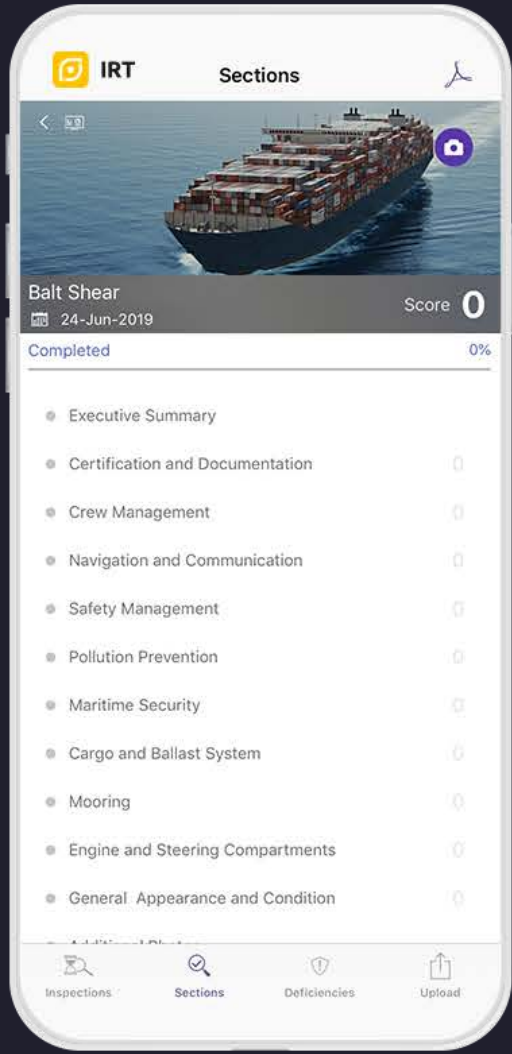


An advanced business analytics tool for visualization of data. BI simplifies and analyzes a large amount of data derived from other *smartPAL* modules. Create business insights with customizable and interactive dashboards and reports for efficient decision-making. BI provides comprehensive reports, charts, and graphs of complex data, easily accessible from the web and/or mobile devices.

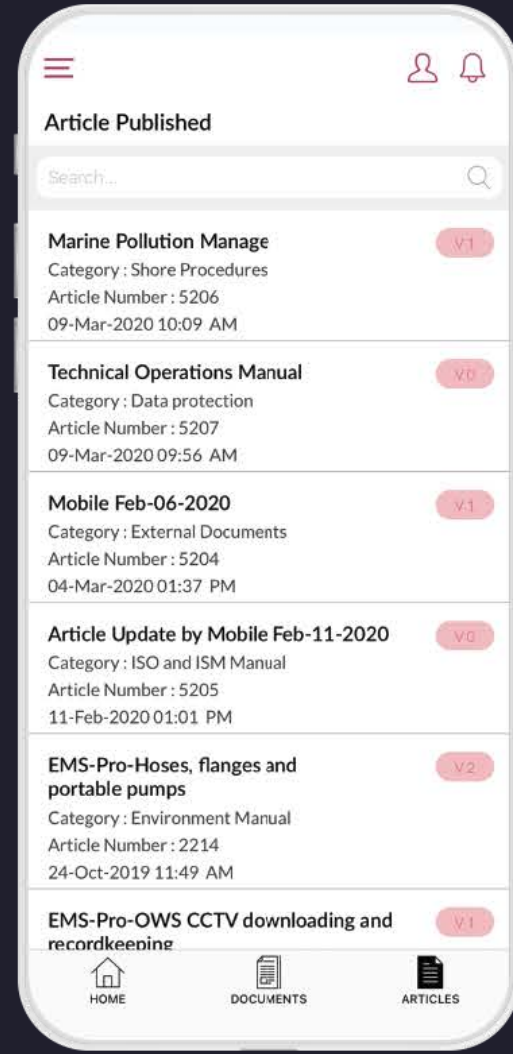
- Provides snapshots on valuable information and data from multiple sources
- Monitor vessels for individual offices with a drill down function
- Study variance in cost and related factors with office to vessel level analysis
- Monitor fleet-wide performance
- Navigate through *smartPAL* system from reports



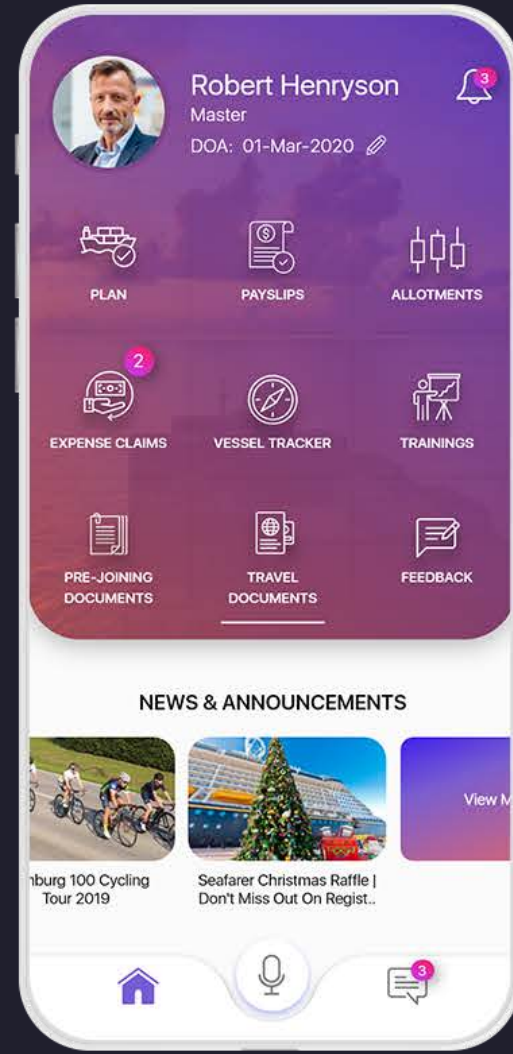
Mobile Apps



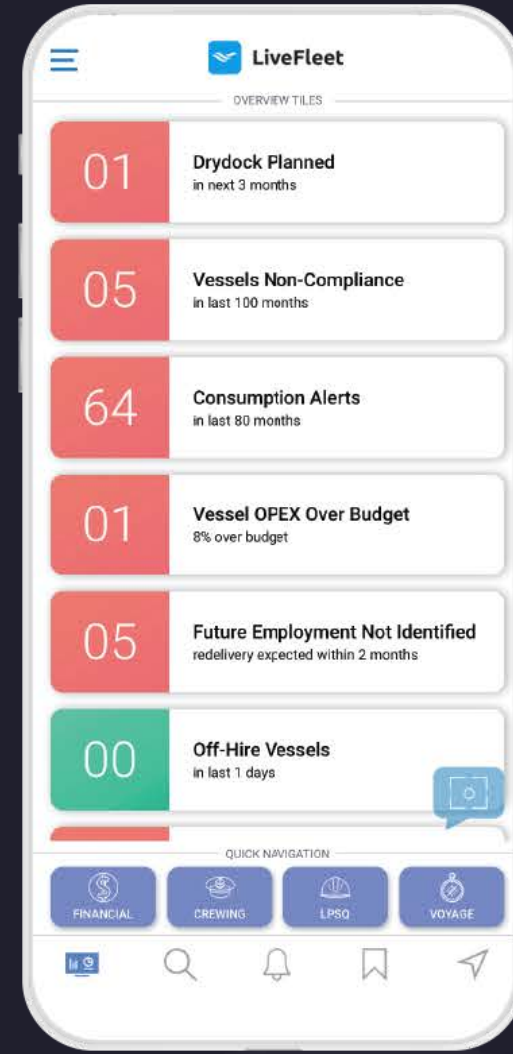
IRT



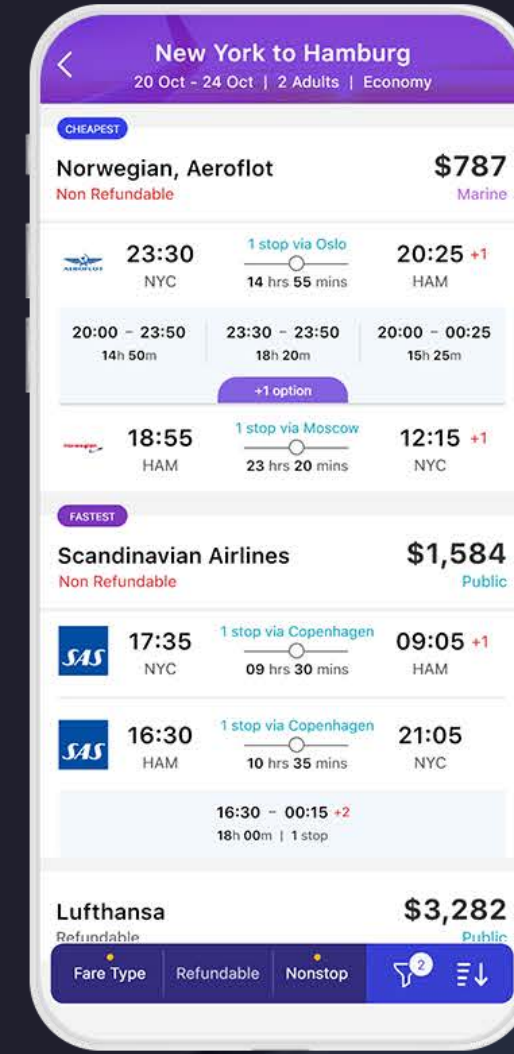
QDMS wiki



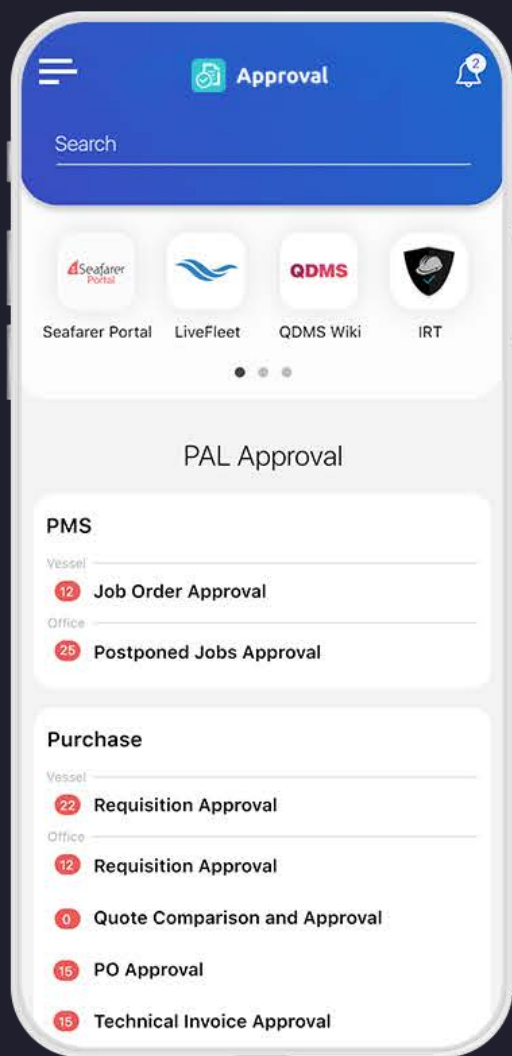
Seafarer Portal



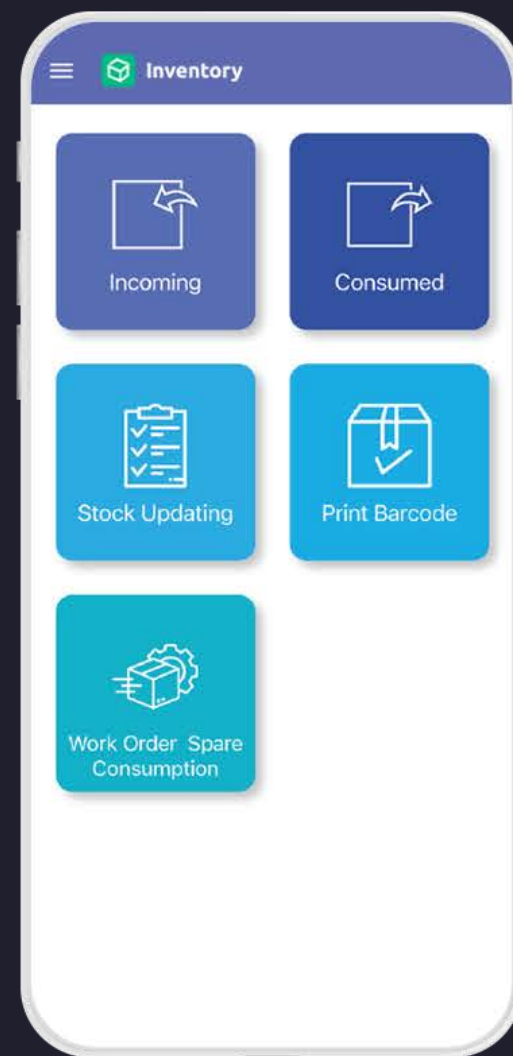
LiveFleet



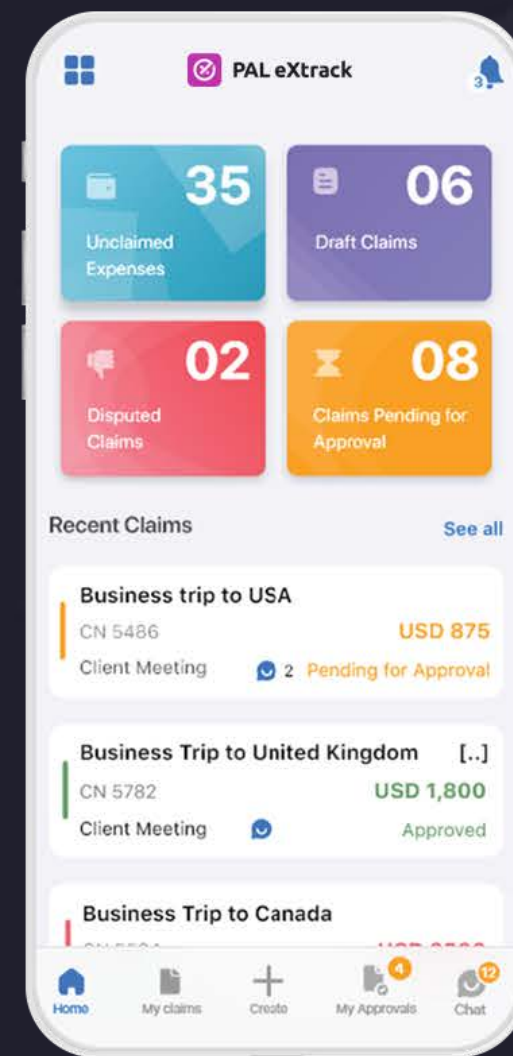
Ticketing



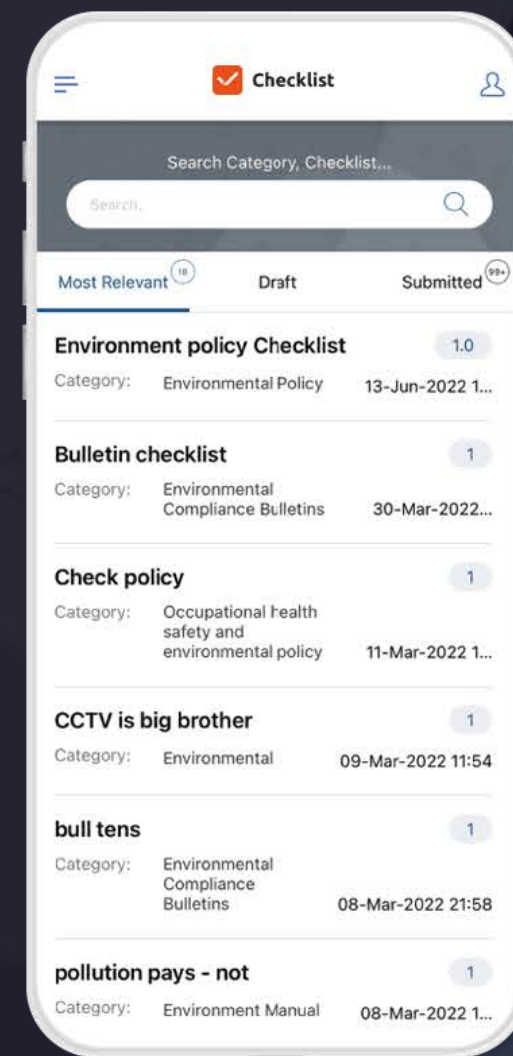
Approval



Inventory



PAL eXtrack



Checklist



Sea Roster

Our Partners



Trusted by



Global Presence



Germany

Vorsetzen 54 20459 Hamburg,
Germany



Singapore

108 Middle Road, #09-00,
Bernhard Schulte House, Singapore 188967



India

MariApps House, Plot No A2-09, SmartCity Kochi SEZ,
Kakkanad, Ernakulam, Kerala Kochi – 682042



Cyprus

Hanseatic House, 111 Spyrou Araouzou,
St. 3036 Limassol, Cyprus



USA

9700 S. Dixie Highway #810,
Miami, FL 33156, USA



UAE

#205, JBC 2, Cluster V, Jumeirah Lake Towers,
Dubai, UAE



Japan

Fukokuseimei Building 17F, 2-2, Uchisaiwaicho 2 Chome,
Chiyoda-ku, 100-0011 Tokyo, Japan



France

Quai d'Arenc CS 10571 – Sky Center,
La Marseillaise 13001, Marseille



KSA

P.O. Box 79800, Al Khobar 31952,
Kingdom of Saudi Arabia



MariApps Marine Solutions

📍 108 Middle Road, #09-00, Bernhard Schulte House, Singapore 188967

✉ info@mariapps.com 🌐 www.mariapps.com

GERMANY | SINGAPORE | INDIA | CYPRUS | USA | UAE | JAPAN | FRANCE | KSA

